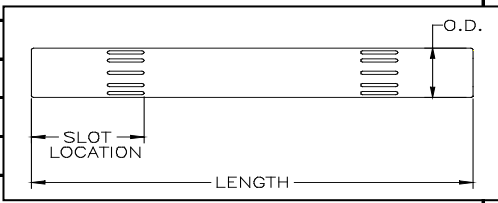
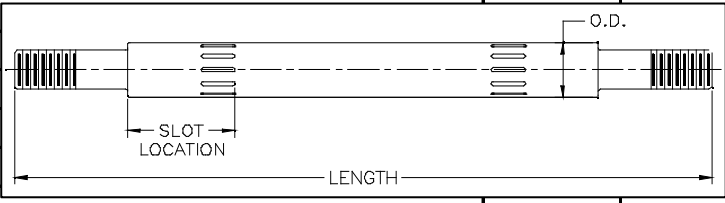


SHAFT CHART

THIS ELECTRONIC DOCUMENT AND ALL PRINTED COPIES OR REPRODUCTIONS ARE
BE USED FOR REFERENCE ONLY.

Updated 02-22-06

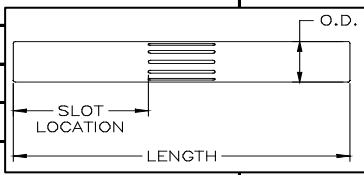
<i>PART NO.</i>	<i>LENGTH</i>	<i>SLOT LOCATION</i>	<i>O.D.</i>
00-3800-03	2.013	.902	.372
00-3800-99-700	2.013	N/A	.494
S01-3800-09	3.350	1.456	.622
01-3800-03-07	3.350	1.985	.622
01-3810-03	3.350	N/A	.622
S02-3800-03	4.937*	2.375	.750
02-3800-03-07	4.937*	2.807	.750
02-3810-03	5.000	N/A	.748
S02-3820-09	4.687	2.000	.750
02-3820-03-07	4.687	2.808	.750
02-3840-03	4.687	N/A	.748
S04-3800-03	5.875	1.407	.872
04-3800-03-07	5.875	1.586	.872
04-3800-03-700	5.531	N/A	.872
04-3811-03	6.439	N/A	.872
S04-3820-09	5.375	1.432	.872
04-3820-03-07	5.375	1.586	.872
04-3820-03-700	4.940	N/A	.872
S04-3830-09	5.375	1.432	.872
04-3830-03-07	5.375	1.586	.872
04-3830-03-700	5.170	N/A	.872
04-3835-03	5.375	N/A	.872
04-3842-03	5.848	N/A	.872
04-3845-08	8.400	N/A	.995
04-3846-08	8.210	N/A	.995
08-3800-03-60	6.099	N/A	1.000
S08-3800-09	10.000	1.450	.872
08-3800-09-07	10.000	1.680	.872
08-3800-09-50	9.750	1.905	.872
08-3800-09-65	9.750	1.993	.872
08-3805-09	10.000	N/A	.872
08-3805-03-83	10.000	N/A	.872
08-3807-03	8.500	N/A	.995
08-3810-09	9.860	N/A	.872
08-3812-03	9.610	N/A	.873
08-3810-03-83	9.860	N/A	.872
08-3811-09	10.500	N/A	.872
S08-3820-09	5.875	1.593	.872
08-3820-03-07	5.875	1.680	.872
08-3840-09	5.875	N/A	.872
08-3841-03	6.875	N/A	.872
08-3842-03	6.750	N/A	.872
08-3843-03	7.500	N/A	.872
S15-3800-09	11.625	1.875	.995

15-3800-09-07	11.625	1.996	.995
15-3800-09-65	11.500	2.614	.995
15-3805-09	11.625	N/A	.995
15-3815-09	11.125	N/A	.993
15-3816-09	14.450	N/A	.995
15-3842-03	15.900	N/A	.995
20-3800-09-07	9.875	2.010	.995
20-3810-09	9.875	N/A	.995
20-3830-09-07	10.375	2.010	.995
20-3841-09	10.375	N/A	.995
* Indicates revised dimensions			N/A = not applicable
** Part ID. is located on end of shaft.			
ADS (Air Distribution System) Legend			
P = Pro-Flo			
S = Traditional (Obsolete-Contact Spectrom)			
T = Turbo-Flo			
A = Accu-Flo			
W = Wil-Flo (Obsolete - No longer available)			
PV = Pro-Flo V			
A4/T4/P4/PV4 (all), A8/T8/P8/PV8 (Teflon),			
P8/PV8 (Ultra-flex) & T20			
			
A8/T8/P8/PV8 (non-Teflon), T8 Stallion & A15/P15/PV15/T15 (all)			
			

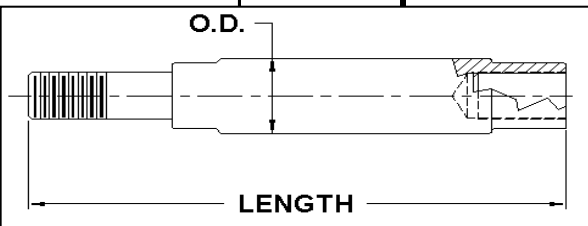
"UNCONTROLLED" AND SHALL		
ADS	PART ID.**	
A/S	N/A	
P	N/A	
S	M1D	Contact Spectrum
A/T	T1	
P	P1	
S	RM2D	Contact Spectrum
T	RT2	
P	RP2	
S	TM2D	Contact Spectrum
T	TT2	
P	TP2	
S	RT4D	Contact Spectrum
T	RT4	
P/PV	RP4	
P/PV	PBRP4	
S	TM4D	Contact Spectrum
T	TM4	
P/PV	TP4	
S	UM4D	Contact Spectrum
T	UT4	
P/PV	UP4	
A	UA4	
P	PBTP4	
PVH400S	N/A	
PVH400S	N/A	
T	N/A	
S	RM8D	Contact Spectrum
T	RM8	
S	MM8D	Contact Spectrum
T	MM8	
A	RA8	
W	RA8SS	Obsolete
PV810	N/A	
P/PV	RP8	Obsolete
P/PV	RP9	
PV	RP8SS	
P/PV	PBRP8	
S	TM8D	Contact Spectrum
T	TT8	
A/P/PV	TP8	
P/PV	UP8	
P/PV	PBTP8	
P/PV	PBUP8	
S	M15D	Contact Spectrum

T	M15	
T	MM15	
A/P/PX	A15	Stamped w/A
W	W15	Obsolete
W	N/A	Obsolete
P/PV	N/A	
T	M20	
PV	PV20	
T	N/A	
PV	PV20	

A.025, A1/P1/T1 & A2/P2/T2 (all)



H800 "HP250" (08-3800-03-60)



--	--	--